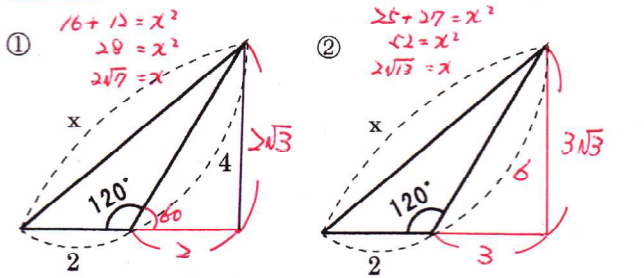
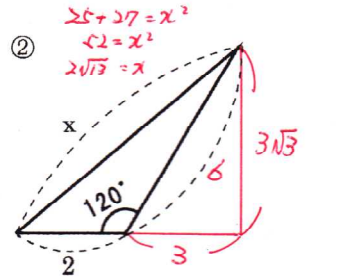


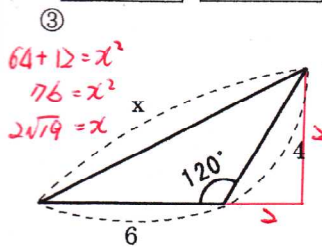
問題1 次のx, y, zの長さや面積Sを求めよ。



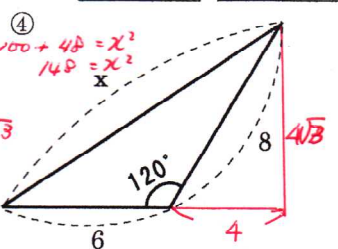
x  $2\sqrt{7}$  S  $2\sqrt{3}$



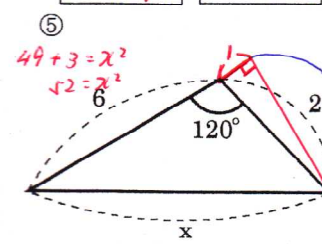
x  $2\sqrt{13}$  S  $3\sqrt{3}$



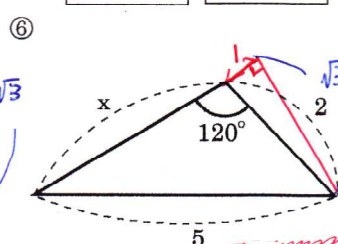
x  $2\sqrt{19}$  S  $6\sqrt{3}$



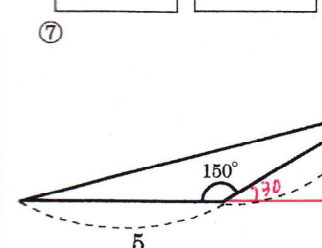
x  $2\sqrt{37}$  S  $12\sqrt{3}$



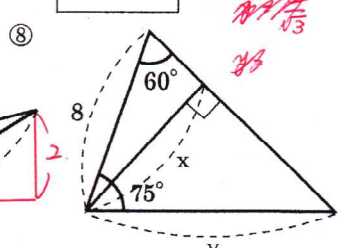
x  $2\sqrt{13}$  S  $3\sqrt{3}$



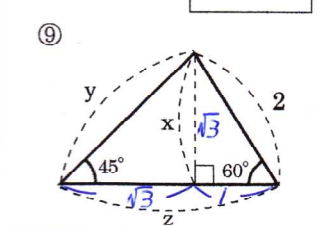
x  $\sqrt{52}-1$



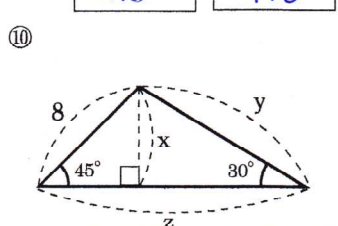
S 5



x  $4\sqrt{3}$  y  $4\sqrt{6}$

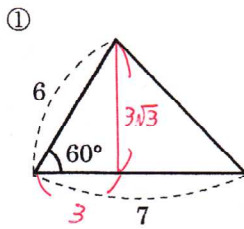


x  $\sqrt{3}$  y  $\sqrt{6}$  z  $1+\sqrt{3}$

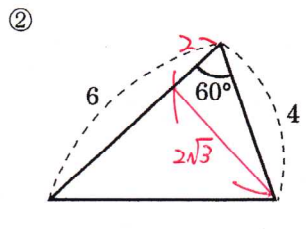


x  $4\sqrt{2}$  y  $8\sqrt{2}$  z  $4\sqrt{2}+4\sqrt{6}$

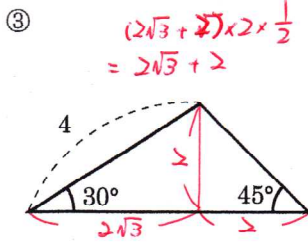
問題2 次の図形の面積Sと辺の長さを求めよ。



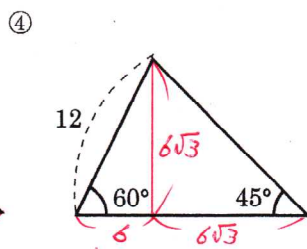
S  $\frac{21\sqrt{3}}{2}$



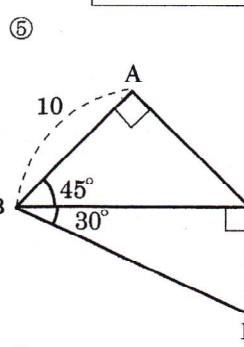
S  $6\sqrt{3}$



S  $2\sqrt{3}+2$



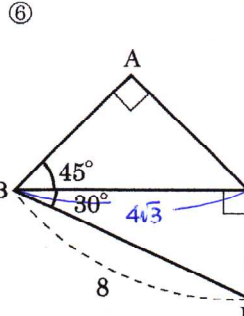
S  $18\sqrt{3}+54$



BC  $10\sqrt{2}$

CD  $\frac{10\sqrt{6}}{3}$

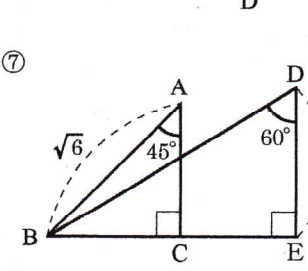
BD  $\frac{20\sqrt{6}}{3}$



CD 4

BC  $4\sqrt{3}$

AB  $2\sqrt{3}$



AC  $\sqrt{3}$

CE  $\sqrt{3}$