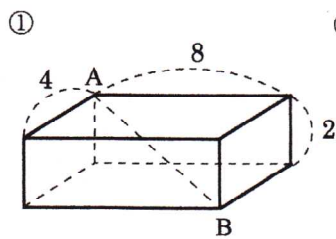


月	間違えた数
日	

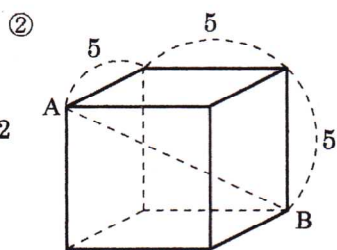
中3 数 学
三平方の定理-⑧

合格	NAME
失格	

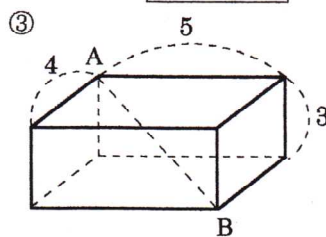
問題1 次の立体のABの長さを求めよ。



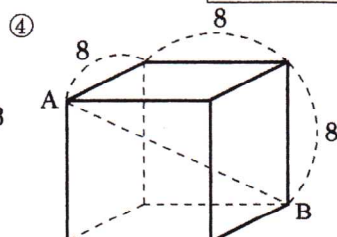
$2\sqrt{5}$



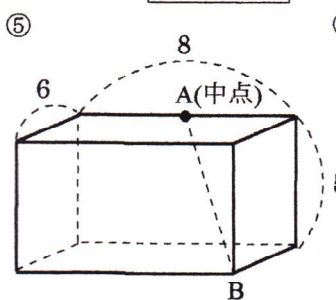
$5\sqrt{3}$



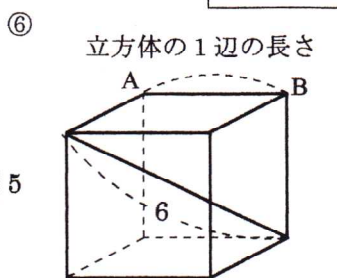
$5\sqrt{2}$



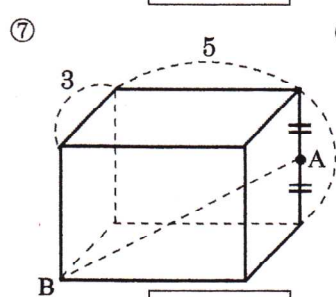
$8\sqrt{3}$



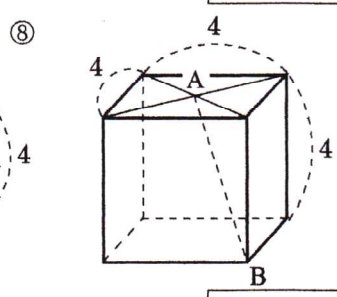
$\sqrt{77}$



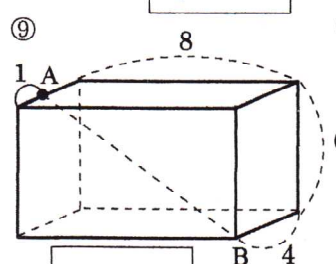
$2\sqrt{3}$



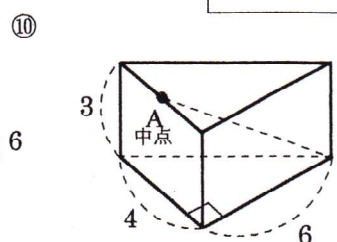
$\sqrt{38}$



$2\sqrt{6}$

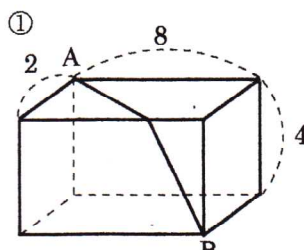


$\sqrt{101}$

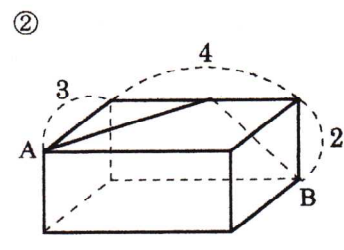


7

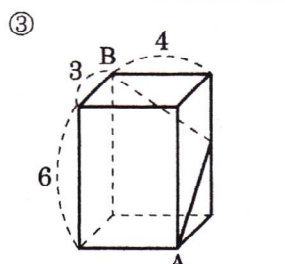
問題2 点Aから点Bまでの最短距離を求めよ。



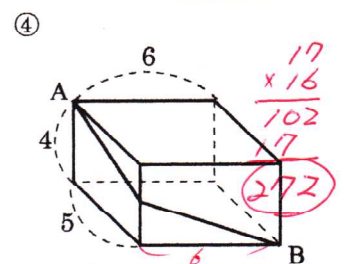
10



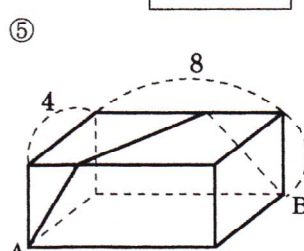
$\sqrt{41}$



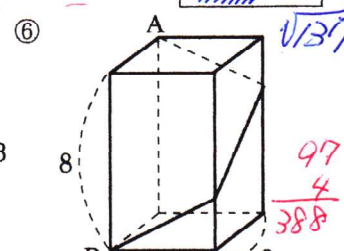
$\sqrt{85}$



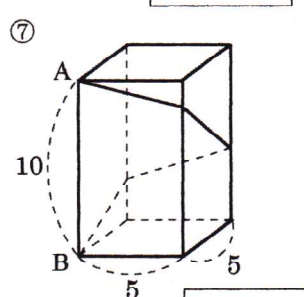
$\sqrt{172}$



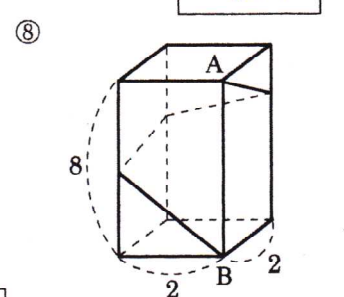
$2\sqrt{41}$



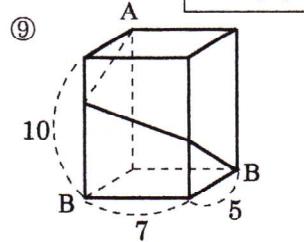
$2\sqrt{97}$



$10\sqrt{5}$



$8\sqrt{2}$



$\sqrt{389}$

