

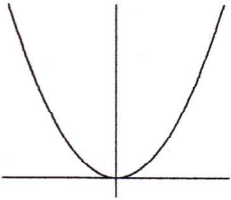
月	
日	

中3数学 2次関数-②

合格	NAME

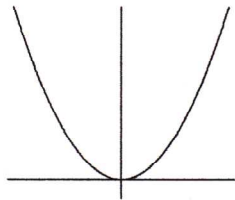
問題1 つぎの関数のxの変域に対するyの変域を求めよ。

①  $y=x^2: -3 \leq x \leq 5$



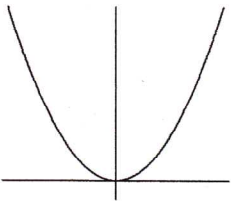
$0 \leq y \leq 25$

②  $y=x^2: -4 \leq x \leq -2$



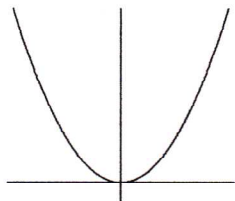
$4 \leq y \leq 16$

③  $y=x^2: 1 \leq x \leq 6$



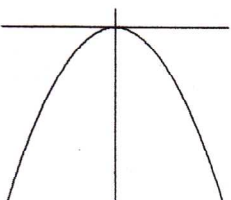
$1 \leq y \leq 36$

④  $y=x^2: -5 \leq x \leq 2$



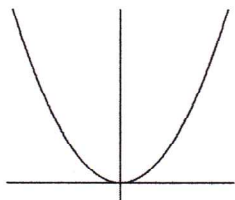
$0 \leq y \leq 25$

⑤  $y=-x^2: -3 \leq x \leq -1$



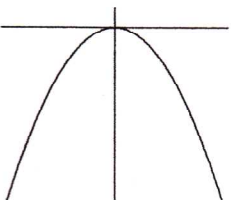
$-9 \leq y \leq -1$

⑥  $y=2x^2: -3 \leq x \leq 2$



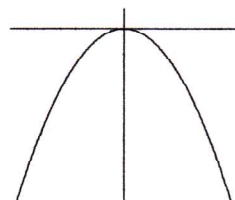
$0 \leq y \leq 18$

⑦  $y=-2x^2: -5 \leq x \leq -3$



$-50 \leq y \leq -18$

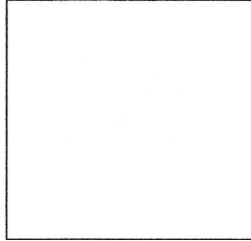
⑧  $y=-2x^2: -4 \leq x \leq 6$



$-72 \leq y \leq 0$

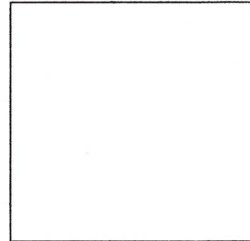
問題2 つぎの関数のxの変域に対するyの変域を求めよ。

①  $y=3x^2: -2 \leq x \leq 4$



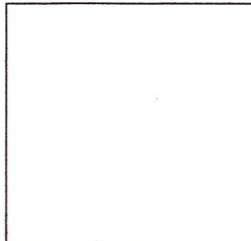
$0 \leq y \leq 48$

②  $y=3x^2: 3 \leq x \leq 5$



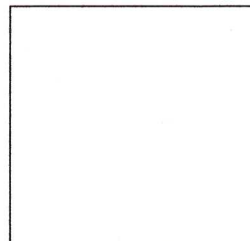
$27 \leq y \leq 75$

③  $y=-2x^2: -3 \leq x \leq -1$



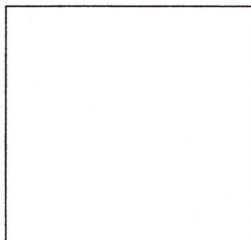
$-18 \leq y \leq -2$

④  $y=-2x^2: -2 \leq x \leq 1$



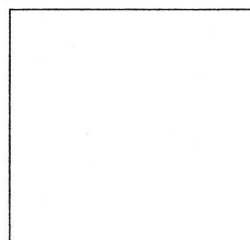
$-8 \leq y \leq 0$

⑤  $y=-4x^2: -4 \leq x \leq -1$



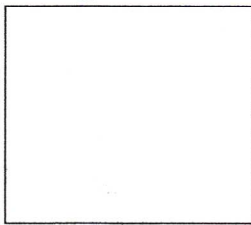
$-64 \leq y \leq -4$

⑥  $y=-4x^2: -3 \leq x \leq 1$



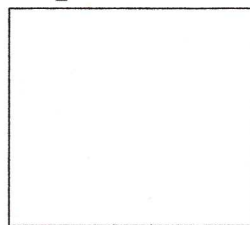
$-36 \leq y \leq 0$

⑦  $y=\frac{1}{2}x^2: -2 \leq x \leq 0$



$0 \leq y \leq 2$

⑧  $y=\frac{1}{2}x^2: -4 \leq x \leq 6$



$0 \leq y \leq 18$