

/	解説
/	各問題に記載あり

中2理科電流と電圧 復習1

NO1~NO6-③

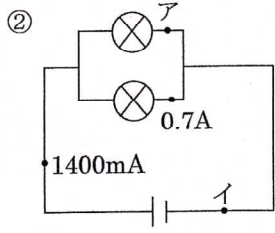
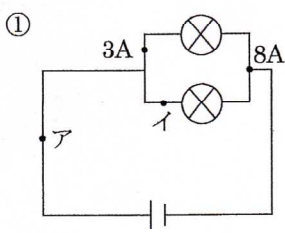
NAME	間違い

問1 次の電流, 電圧を求めよ。

NO6

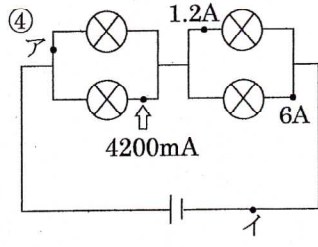
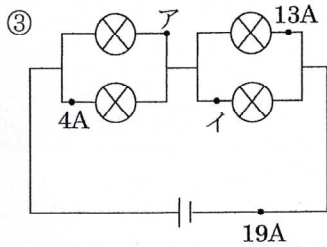
問2 次の合成抵抗を求めよ。

NO14



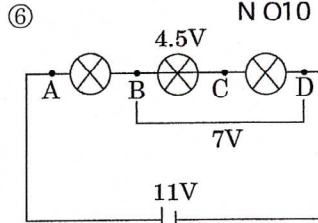
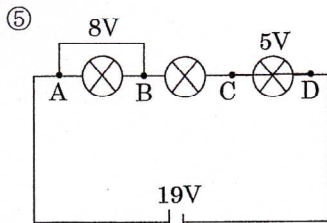
ア 8 A イ 5000 mA

ア 0.7 A イ 1400 mA



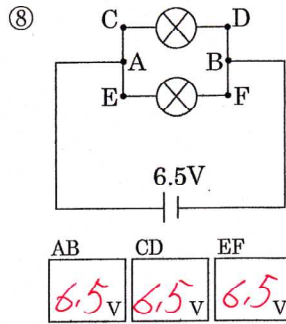
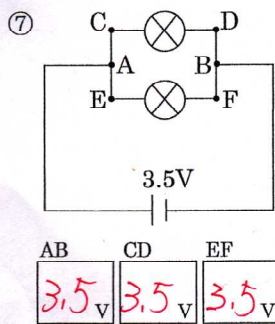
ア 15 A イ 8000 mA

ア 3 A イ 7200 mA



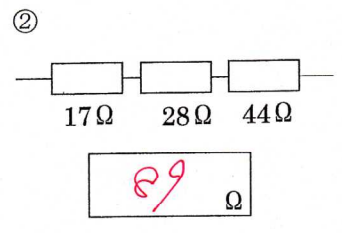
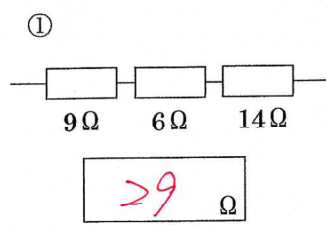
BC 6 V AC 14 V BD 11 V AD 19 V

CD 2.5 V AB 4 V AC 8.5 V AD 11 V



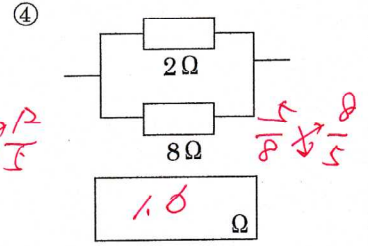
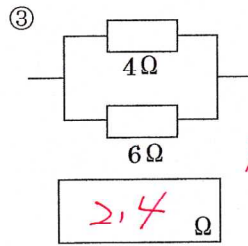
AB 3.5 V CD 3.5 V EF 3.5 V

AB 6.5 V CD 6.5 V EF 6.5 V



29 Ω

89 Ω

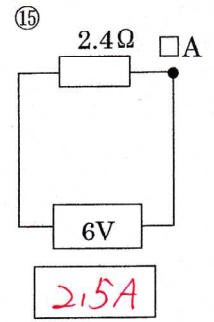
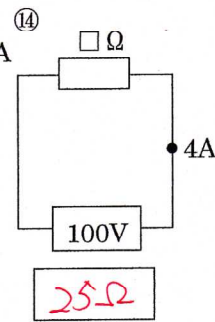
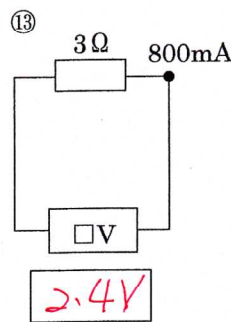


2.4 Ω

1.6 Ω

問3 次の電流・電圧・抵抗を求めよ。

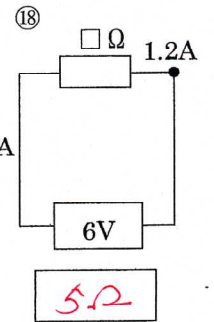
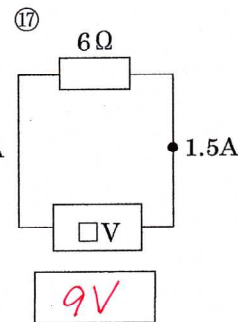
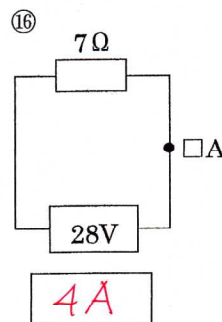
NO14



2.4 V

25 Ω

2.5 A



4 A

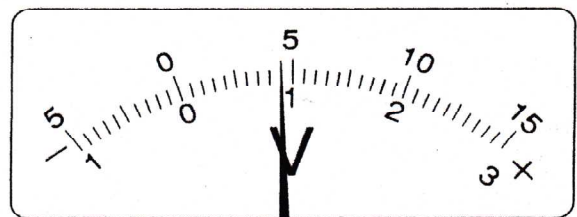
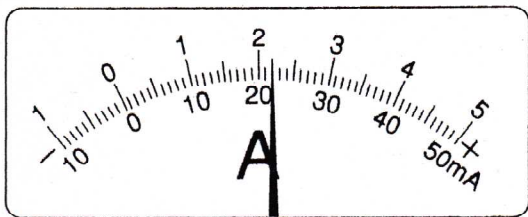
9 V

5 Ω

問4 次の電流計と電圧計の値を求めよ。

NO11

NO12



50mA 500mA 5A

22 220 2.2

300V 15V 3V

90 4.5 0.9