

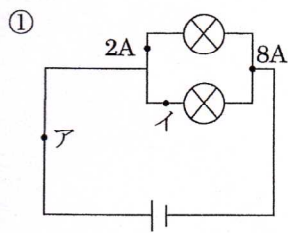
/	解説
/	NO14

中2理科電流と電圧 復習1

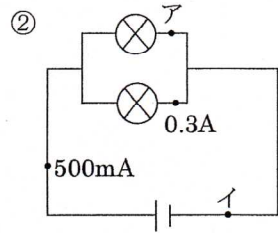
NO1~NO6-①

NAME	間違い

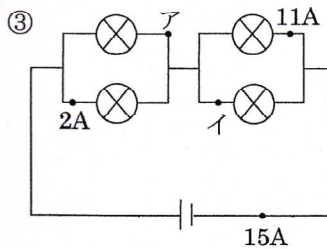
問1 次の電流、電圧を求めよ。



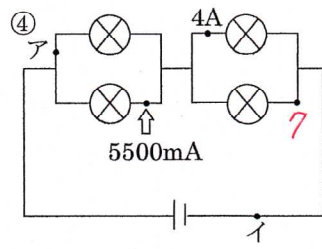
ア 8 A イ 8000 mA



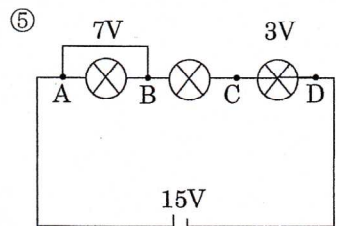
ア 0.2 A イ 500 mA



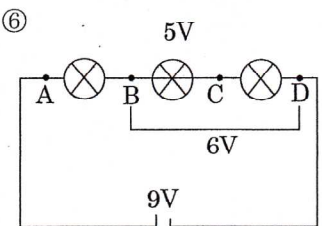
ア 13 A イ 4000 mA



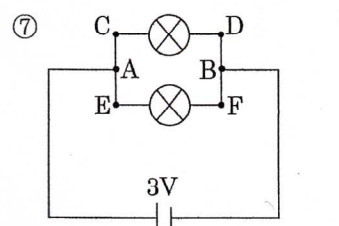
ア 5.5 A イ 11000 mA



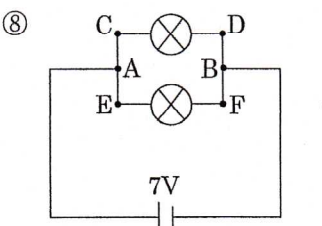
BC 5 V AC 12 V BD 8 V AD 15 V



CD 1 V AB 3 V AC 8 V AD 9 V

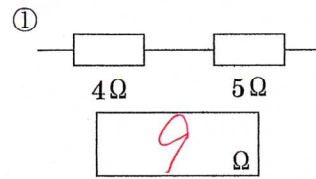


AB 3 V CD 3 V EF 3 V

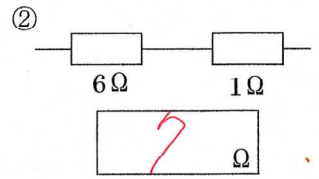


AB 7 V CD 7 V EF 7 V

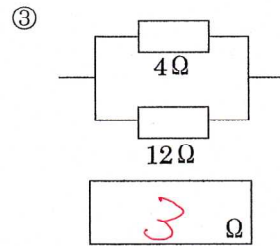
問2 次の合成抵抗を求めよ。



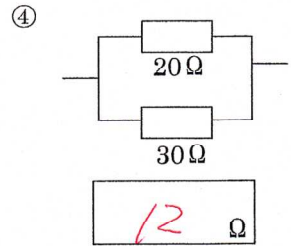
9 Ω



7 Ω

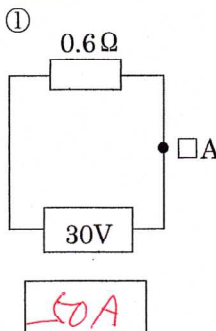


3 Ω

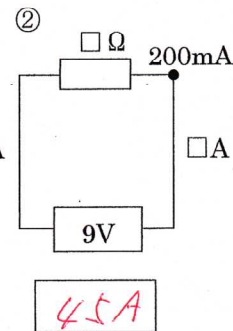


12 Ω

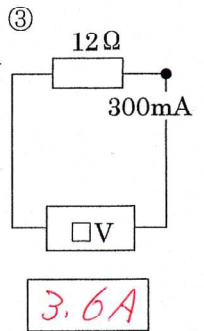
問3 次の電流・電圧・抵抗を求めよ。



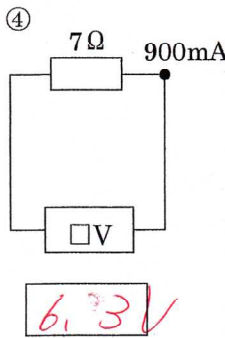
50 A



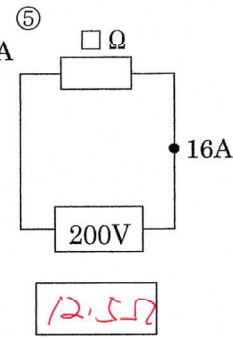
45 A



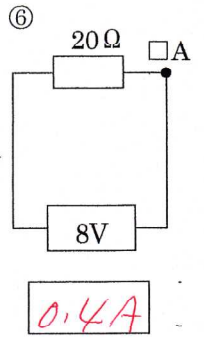
3.6 A



6.3 V

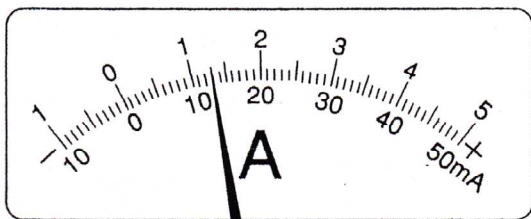


12.5 Ω



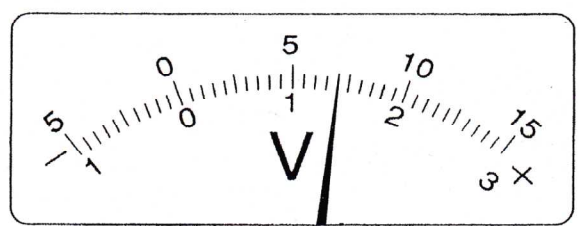
0.4 A

問4 次の電流計と電圧計の値を求めよ。



50mA 500mA 5A

13 130 1.3



300V 15V 3V

140 7 1.4